

Probabilistic Power Plant Dispatch Prediction

Project Manager
Mario Beykirch

Principal Investigator
Prof. Dr. Florian Steinke

Project Term
2019 - 2020

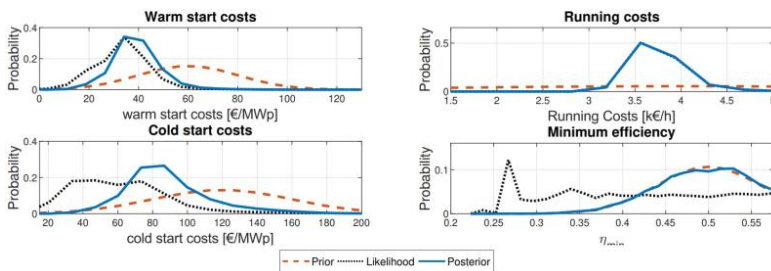
Clusters
Lichtenberg Cluster Darmstadt

Software
MATLAB

Additional Software
GAMS, CPLEX

Institute
Energy Information Networks &
Systems

University
Technische Universität Darmstadt



Introduction

To model future energy systems and their markets, it is important to understand the underlying dynamics of their components correctly. Common fundamental market models simulate power plant dispatch and rely on expert guesses for their parametrization. This is a significant source of uncertainty regarding the model results.

Methods

We proposed a method to predict the dispatch of power plants probabilistically, based only on historic open data. We use published operational data of the power plant as well as electricity and fuel market prices. These are fed into a fundamental dispatch model as part of a Monte Carlo simulation to obtain probabilistic estimates of the dispatch parameters. Additionally, we obtain probabilistic dispatch predictions from the derived probability distributions over the parameter values. We determine the posterior predictive distribution which takes the uncertainty about the power plant parameters into account. Each Monte Carlo step includes solving a Mixed-Integer Linear Program which takes on average about 3 seconds. Since the samples are taken independently, all optimization problems can be solved in parallel. The HPC therefore reduces overall computation time drastically in comparison to that on a single machine, which would be up to three months.

Results

We applied this method to three German natural gas combined cycle power plants and infer the cold and warm start costs, fuel independent running costs, the efficiency at minimum load, and the warm-keeping time, that is, the time after which higher cold start cost are induced by the start up procedure. Our approach increases the prediction accuracy in comparison to deterministic parameter estimation and additionally yields further information on the certainty of the dispatch parameters. The results showed that warm and cold start costs are considerably lower than expert's guesses suggested. For the efficiency at minimum load

out approach could not infer new information.

Discussion

We showed that the probabilistic models had overall higher accuracies than the deterministic model, when considering the highest probability prediction. However, the increase in accuracy is small. One has to decide depending on the use case whether this is worth the increase in required computation time.

Furthermore, the probabilistic prediction gives a measure of certainty to the predicted dispatch. We observed that the prediction is less certain in hours in which the deterministic dispatch was inaccurate. This additional information in the model results might increase the trust in the prediction.

In future research this model could be expanded to include more different power plant technologies, e.g. hard coal and lignite power plants. However, most power plants in Germany are combined heat and power plants and applying the model to them is currently not possible because heat production data is not published. Furthermore, this prediction model could be applied as part of an energy system model. There the results of the parameter inference could be used as parameters of underlying fundamental dispatch models.

Figures

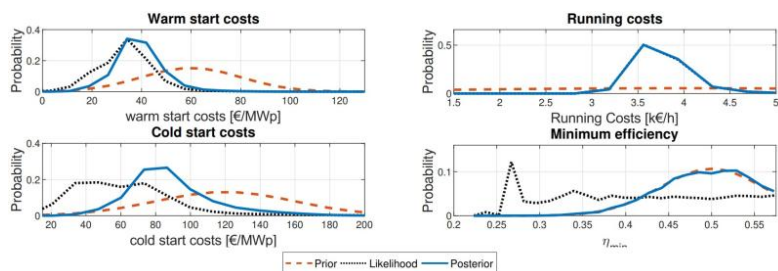


Figure 1: Results of the estimation of an exemplary power plant's operation parameters.

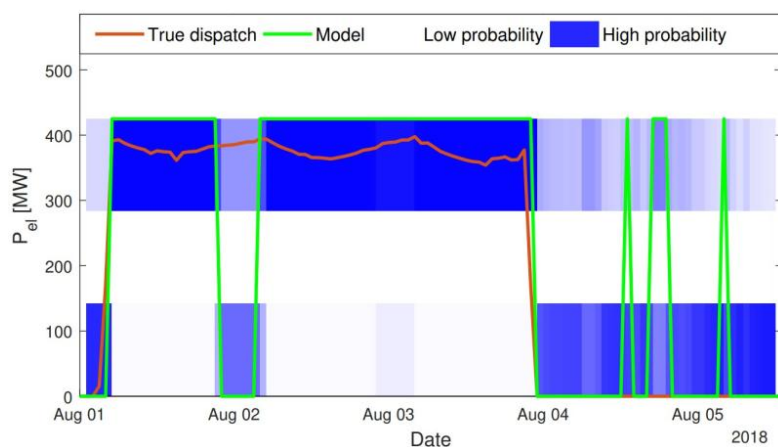


Figure 2: Results of the probabilistic power plant dispatch prediction. The probabilistic model's results are depicted in blue, the maximum a posteriori model's in green. The true operation trajectory is depicted in orange.

Publications

Beykirch, M., Janke, T., Steinke, F.: "Bayesian Inference with MILP Dispatch Models for the Probabilistic Prediction of Power Plant Dispatch", 2019 16th International Conference on the European Energy Market (EEM), pp. 1-6, 2019 <http://dx.doi.org/10.1109/EEM.2019.8916530>

Reference

Beykirch, M., Janke, T., Steinke, F.: "Learning Dispatch Parameters of Thermal Power Plants from Observations", 2018 IEEE PES Innovative Smart Grid Technologies Conference Europe (ISGT-Europe), pp. 1-6, 2018 <https://doi.org/10.1109/ISGTEurope.2018.8571825>

Last Update: 2022-05-13 18:53